

## TAKING ACTION

Four plastic items you can stop using today...

- Straws
- Takeaway coffee cups
- Water bottles
- Shopping bags

Councils around NZ are taking up the challenge of being socially responsible and reducing the volume of plastic items that are used only once but last forever.

Imagine what churches could do with this challenge!



(Thanks Auckland E-News for the graphic)

## LOVING THOSE WHO ARE HOMELESS

Every day The Gubbio Project provides daily provisions and chaplaincy for homeless guests – those living on the streets. This heartfelt video shows how the Project brings dignity to many, is definitely worth watching [youtube.com/watch?v=hga4Dcw5sgw](https://www.youtube.com/watch?v=hga4Dcw5sgw)



## CARE PACKS FOR THOSE LEAVING PRISON

We want every woman leaving prison under our care to have the best chance of achieving her goal of rebuilding a better life. Usually women leave prison in the clothes they arrived in. But Family Works staff try to make sure the women we help leave in new pre-loved clothes and have a back pack filled with helpful items such as a t-shirt, a pen and some snacks and breakfast food. We also would like to include an inexpensive prepaid phone.

### Can you help?

An important back pack item is a toilet bag filled with a toothbrush, toothpaste, soap/body wash, roll-on deodorant, a flannel, a comb, shampoo and some sanitary products. We are looking for youth or church groups who would like to help us with these items. If you are interested contact Anne on [anne.overton@psn.org.nz](mailto:anne.overton@psn.org.nz)



Livanna and Jarred did household chores to raise money to buy the Christmas gifts they then donated.



## Community CONNECTIONS

Summer 2018

## THE GIFT OF GIVING STARTS YOUNG

When Jason, one of our Family Works' Social Workers in Schools, asked PSN's Community Relationships Manager to help get some clothes for a five-year-old and an eight-year-old boy, Anne Overton put the word out to local churches.

At the tender ages of five and seven, Livanna and Jarred, who attend Greenlane Presbyterian Church, decided they could help. Jared sorted out some pre-loved items and they were both keen to buy the boys some new clothes and toys. So Tala, their aunt, suggested they earn the money by doing chores which they were happy to do. Even at their young ages, Livanna and Jarred understand what a blessing it is to help others. Thank you for your amazing spirit of generosity. The two boys were delighted with your awesome gifts and to know they came from you.

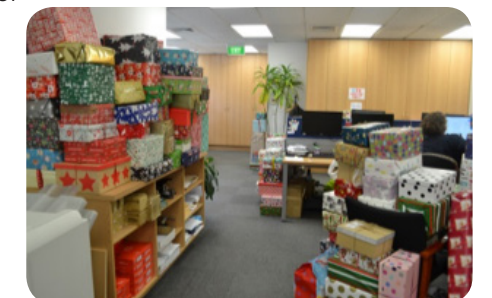
The hundreds of Aucklanders who participated in the Auckland Christmas Shoebox project also experienced the joy of giving. They donated more than 2,000 beautifully wrapped gift boxes which were delivered to PSN's Support Office and to Auckland Family Works' sites in November

and December then distributed to the children we work with and to other organisations.

"I can't believe the generosity and extravagance of the gifts my children received," wrote one Family Start mother.

"Thank you so much for giving hope and happiness to a three-year-old boy and his grateful mother," wrote another.

A huge thank you to everyone who contributed to making a child's Christmas special and also to St Cuthbert's Junior and Middle School students who gave hundreds of gifts which we sent to our Whangarei, Bay of Plenty, Hamilton and Rotorua sites.



### Contact details:

Anne Overton, Community Relationship Manager  
 Presbyterian Support Northern, PO Box 99890, Newmarket, Auckland 1149.  
 E: [anne.overton@psn.org.nz](mailto:anne.overton@psn.org.nz) P: 09 520 8624 M: 027 520 8653.  
 Or visit [www.psn.org.nz](http://www.psn.org.nz) for more information or to download more copies.





## WHAT'S ON

Here are some upcoming events to inspire you to get involved in your community.

**Sunday 4 March 2018**

### Children's Day

**Children's Day** is a special day set aside to celebrate children – Imagine if all our children had a fair go.

At Family Works we believe that children need to be given time – should be praised and receive encouragement – listened to with love and affection – talked to with love and affection – and given opportunities to have new and positive experiences.



**3 - 9 March 2018**

### Light it Orange - Shine

**Why Light It Orange?** Domestic violence thrives in darkness and secrecy. If no one asks about it and no one talks about it, nothing changes. Join Light It Orange to shine a light on domestic violence and be part of the solution.

In March, join hundreds of schools, churches, workplaces, clubs, businesses, and individuals throughout New Zealand to Light It Orange and help raise much needed funds and awareness to help victims of family violence to get safe and stay safe.

Visit [www.lightitorange.co.nz](http://www.lightitorange.co.nz) for more information



**24 & 25 March 2018**

### Neighbours Day Aotearoa

Join the growing number of churches that intentionally celebrate with their neighbours each year and strengthen their neighbourhood relationships.

Check out the Neighbours Day Aotearoa website [neighboursdayaotearoa.org](http://neighboursdayaotearoa.org) for great resources.



## WHO DID I HELP? SOCIAL ISSUES

For those who love statistics:

**250** Christmas Food hampers delivered to families around Auckland

**34** Christmas food boxes

**130** Christmas parcels of food and gifts for rough sleepers and people struggling on the margins

**1200** Christmas Shoeboxes for Auckland children nominated by our Family Works staff

**665** Christmas gifts to children out of Auckland

**300** Emergency food parcels for December



Christmas food boxes

What does this really mean?

**Joy on a child's face when they receive a beautiful Christmas gift that someone has specially chosen for them. Imagine if that was you, wouldn't you feel special?**

Parents always want to give their children the best that they can, but as we well know, families' finances are often stretched at Christmas. So receiving a food hamper, a gift or emergency food parcel means a little less stress for the mums, dads, and caregivers.

Maybe it meant that family violence in some families didn't happen because there was food on the table and presents for the children.

Maybe it meant that families could have a fun day out because there was money to pay for petrol and even an ice cream.



Anne Overton  
Community Relationship Manager

*Thank you!*

to everyone who helped us at Presbyterian Support Northern to make Christmas and the holiday season a blessing for hundreds and hundreds of children and their families.

As a face is reflected in water, so the heart reflects the real person.

Proverbs 27 :19 (NLT)